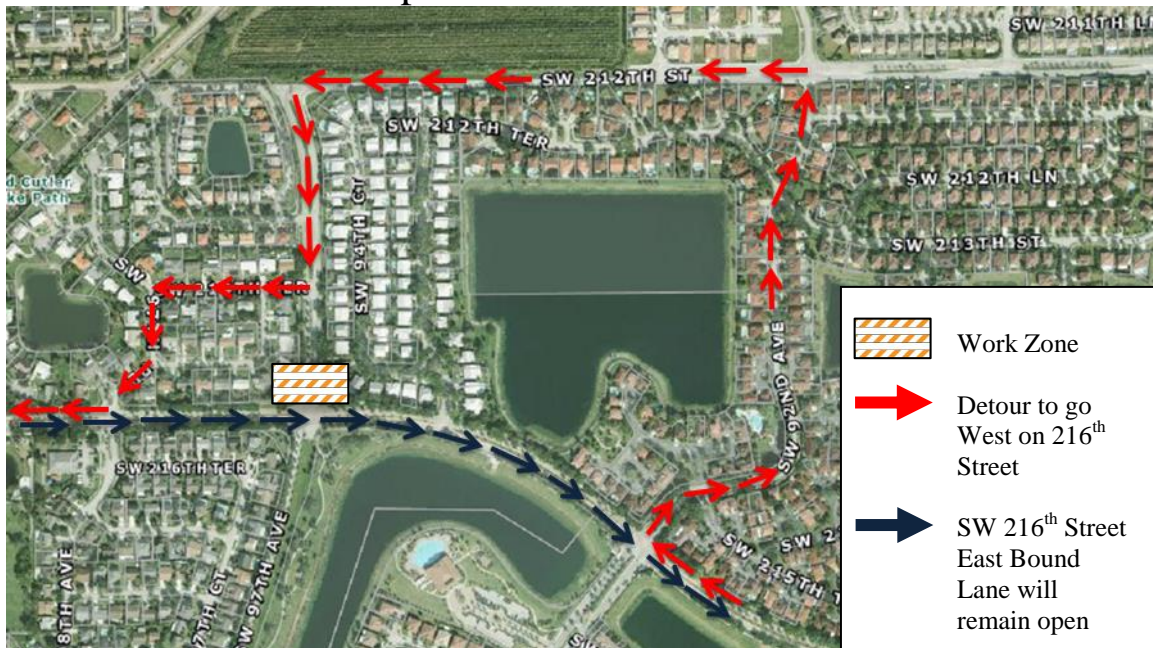




SW 216TH Street and 97th Avenue Traffic Circle Phase I

Planned Detour

September 24 – October 8



Dear Commuters:

The Town of Cutler Bay would like to inform you that starting September 24th, the following traffic changes will take effect:

- West Bound Lane will be closed on SW 216th Street between SW 92nd Avenue and SW 97th Place. (Open to local traffic only)
- East Bound Lane on SW 216th Street will remain open.

Commuters are encouraged to utilize the suggested “Detour.”

We apologize for any inconvenience this may cause to your daily commute. If you have any questions or concerns, please contact the Town’s Public Works Department at: (305) 234-4262.

We are making every effort to reduce the inconveniences caused by the ongoing construction.

To Be Set Up in Accordance with
FDOT Index 660 & MUTCD TA-20

