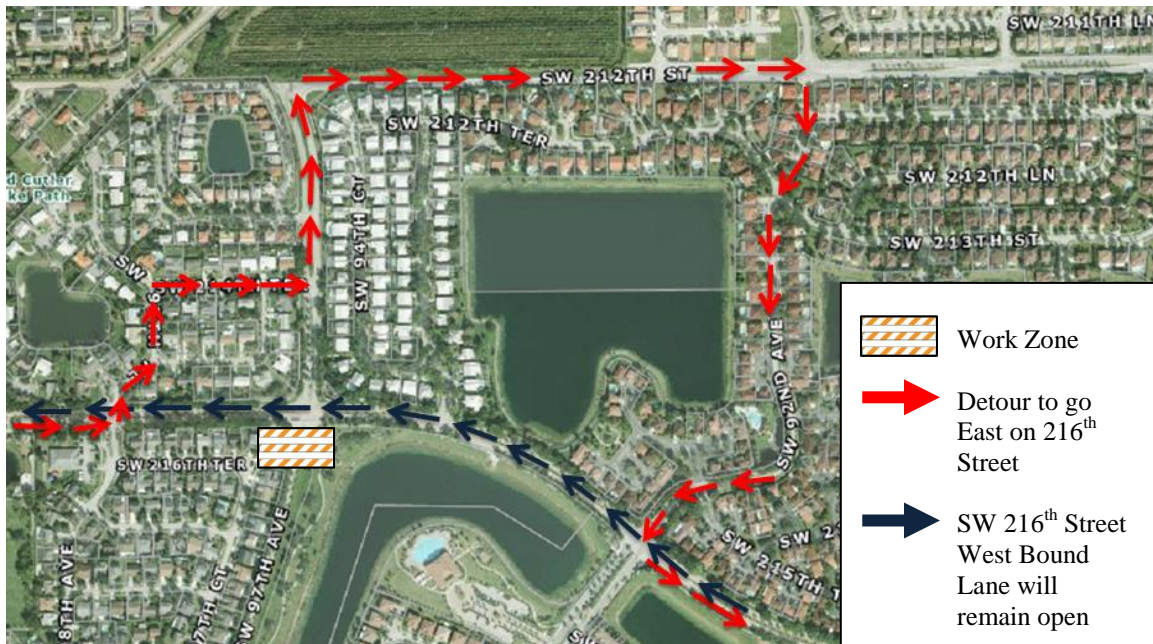




SW 216TH Street and 97th Avenue Traffic Circle Phase II

Planned Detour

October 9 – October 23



Dear Commuters:

The Town of Cutler Bay would like to inform you that starting October 9th, the following traffic changes will take effect:

- East Bound Lanes will be closed on SW 216th Street between SW 97th Place and SW 92nd Avenue. (Open to local traffic only)
- West Bound Lanes on SW 216th Street will remain open.
- Dates may change depending on completion of Phase I.

Commuters are encouraged to utilize the suggested “Detour.”

We apologize for any inconvenience this may cause to your daily commute. If you have any questions or concerns, please contact the Town’s Public Works Department at: (305) 234-4262.

We are making every effort to reduce the inconveniences caused by the ongoing construction.

To Be Set Up in Accordance with
FDOT Index 660 & MUTCD TA-20

